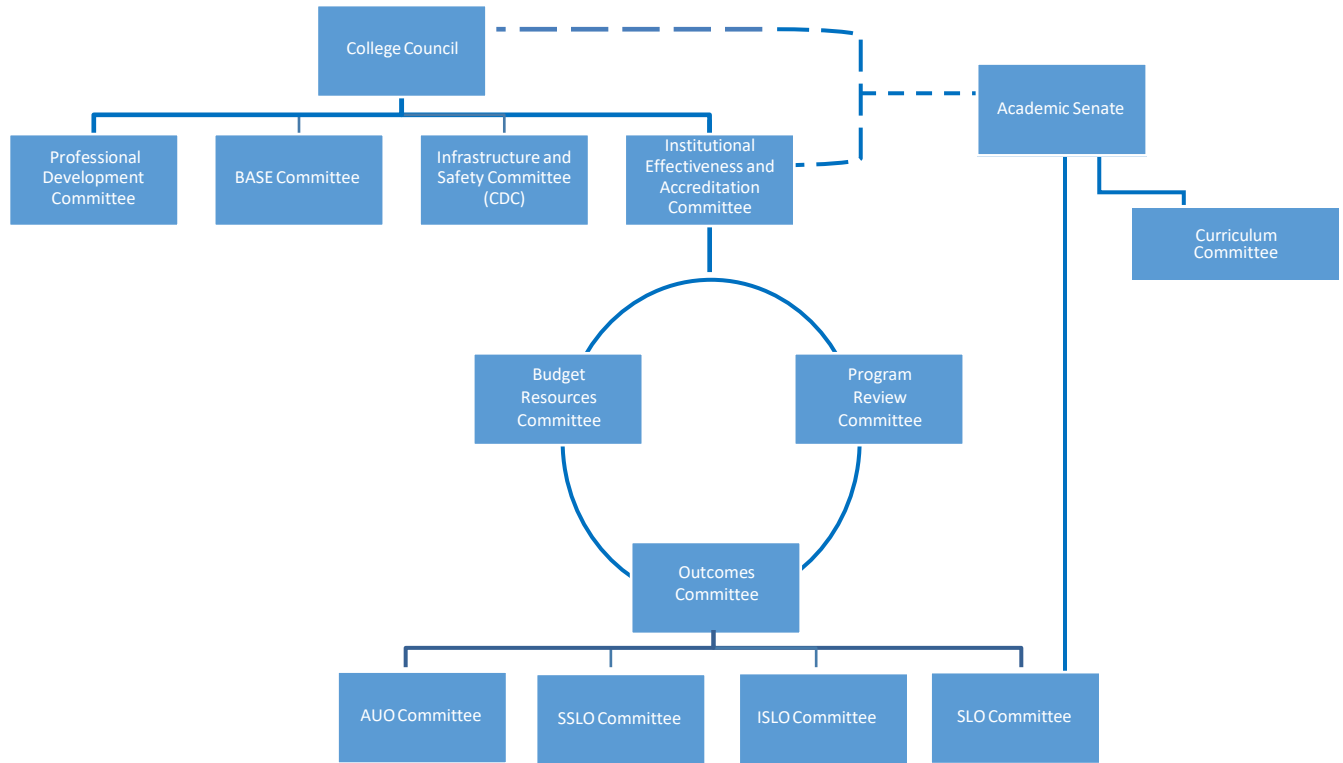


WHCC Governance Structure Spring 2017



WHCC Committee Membership

College Council (CPC/PEC Merge)	
President	Director, Financial Aid
Executive Vice President	Coordinator, Workforce
Deans/Associate Deans	Prog Dir, Equity
Director, Farm of the Future	Prog Dir, CCPT
Director, Health Careers	CSEA Rep CTA Rep
Director, International Students Program	Student Rep
Director, Title IV/TRiO	Academic Senate Rep
Director, Residential Living	Inst. Effect. Accred. Committee Rep
Manager, Food Services	Police
Director, M & O and Auxiliary Services	3 Faculty Reps

IEAC Redesign	
ALO	Classified Rep
Academic Senate Rep	Budget Resources Rep
Curriculum Rep	SSLO (NISLO) Rep
Professional Dev. Rep	Institutional Student Learning Outcomes Rep
Basic Skills and Equity Rep	Administrative Unit Outcomes (ASLO) Rep
Program Review Rep	Student Learning Outcomes Rep
Student Rep	

CPC Review 4/19/17
 FAM Review 4/20/17
 PEC Review 4/26/17
 IEAC Review 5/1/17
 CPC Approval 5/10/17